

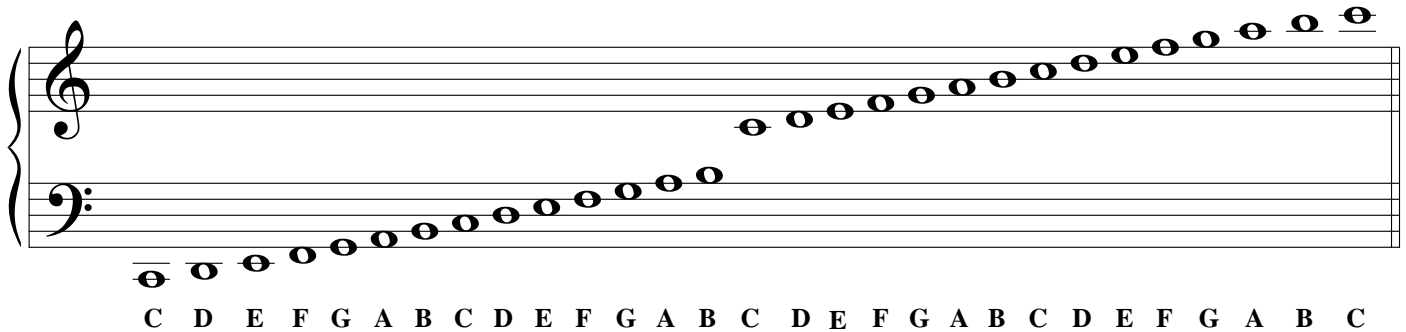
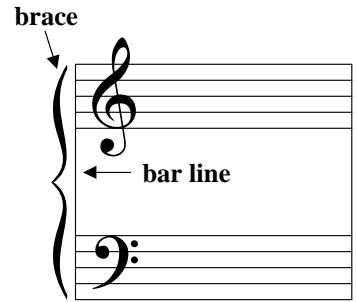
Lesson 8: The Grand Staff

The **grand staff** represents the treble staff and bass staff joined together.

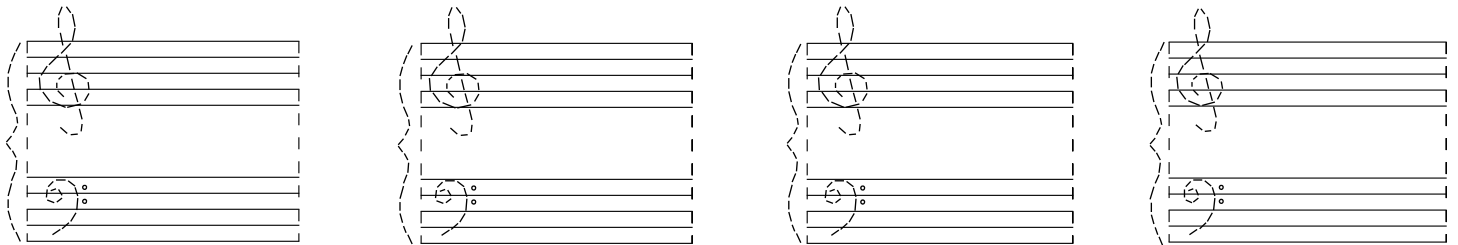
The brace is a curved line and bar line that combines the treble and bass staff.

A ledger line is a small line added to the note when it is either above or below the staff.

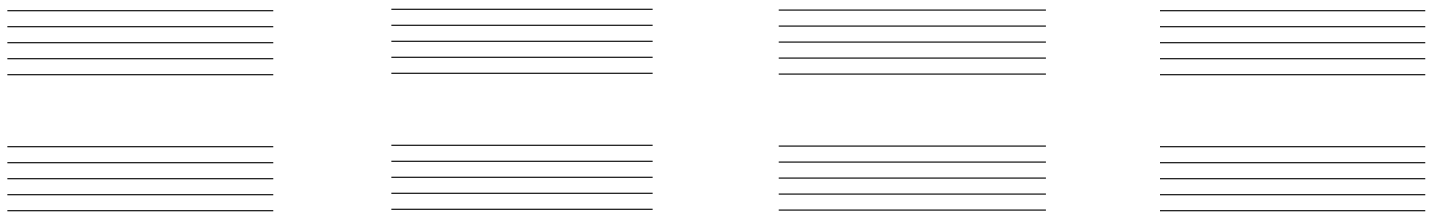
The Middle C note is on the ledger line that is between the treble and bass staff.



1. Draw the grand staff by tracing the braces, bar lines, and clefs.



2. Turn the following staff into grand staff by adding braces, bar lines, and clefs.



3. Write the letter name for each note.

