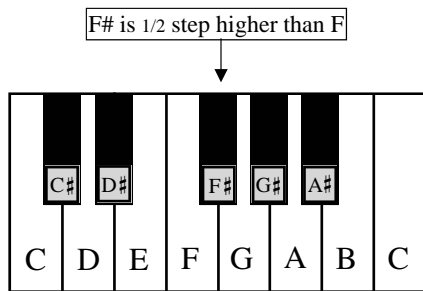


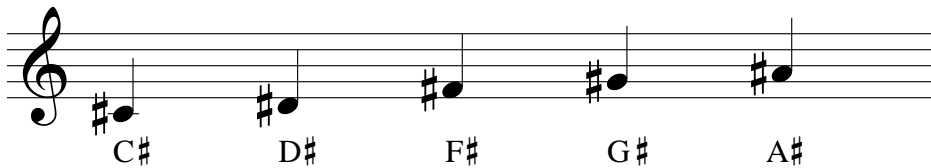
Lesson 17: Sharps

A **sharp** sign (#) raises the pitch of a note by a half step.

On the keyboard of a piano, the black key to the right of a white key is a half step higher and called a sharp.



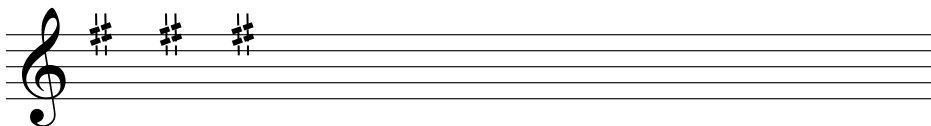
Examples:



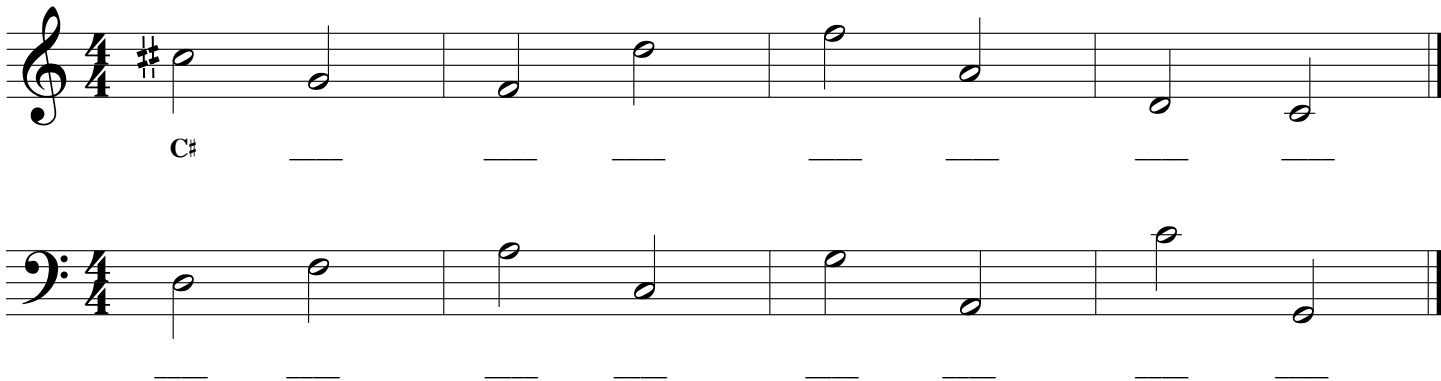
To say the name of a sharp note, say the letter name first and the sharp next. For example, "F sharp".

To write a sharp note on a staff, place the sharp sign to the left of the note.

1. Try drawing sharps by tracing over the dotted lines. Then draw five more sharps on the staff.



2. Draw a sharp sign in front of each note. Then write the names of the notes indicated.



3. Draw the notes indicated.

